

# Wilderness Trail

by Ed Wargo



Quilt design by Denise Russell.

Quilt size: 62" x 62".

Skill Level: Advanced Beginner.

**Blank Quilting Corporation**  
49 West 37th Street ♦ New York, NY 10018  
Tel: 800-294-9495 ♦ Fax: 212-679-4578  
[www.blankquilting.net](http://www.blankquilting.net)

facebook

Free Project  
NOT FOR RESALE



# Wilderness Trail - Fabrics in the Collection



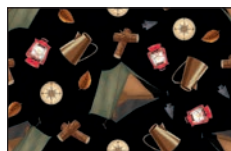
2062P-39 Wilderness Panel  
Brown



2054-39 Animal Patch  
Brown



2056-39 Wilderness  
Stripe - Brown



2051-99 Tossed  
Camping Gear - Black



2052-41 Canoes  
Ivory



2053-88 Tonal Fish  
Red



2055-90 Tossed  
Moose - Lt. Gray



2057-30 Paw Prints  
Tan



2058-60 Plaid  
Olive



2059-35 Scenic RVs  
Lt. Brown



2060-35 Scenic  
Animals - Lt. Brown



2061-60 Animal  
Silhouettes - Olive



2050-39 Animal Blocks  
Brown

Selected fabrics from the  
Urban Legend Collection  
by Tana Muller



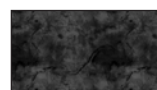
7101-32  
Lt. Brown



7101-33  
Terra



7101-41  
Ivory



7101-98  
Black

# Wilderness Trail - Quilt 2

Page 1

## Materials

*Yardages and cutting instructions are based on 42" of usable fabric width.*

1/8 yard 2051-99 Tossed Camping Gear - Black  
1/8 yard 2052-41 Canoes - Ivory  
1/4 yard 7101-33 Urban Legend - Terra  
1/4 yard 2055-90 Tossed Moose - Lt. Gray  
1/4 yard 2058-60 Plaid - Olive  
1/3 yard 7101-32 Urban Legend - Lt. Brown  
1/2 yard 2053-88 Tonal Fish - Red  
5/8 yard 7101-98 Urban Legend - Black  
5/8 yard 2057-30 Paw Prints - Tan  
2/3 yard 2050-39 Animal Blocks - Brown  
1 yard 2061-60 Animal Silhouettes - Olive  
1-1/4 yards 7101-41 Urban Legend - Ivory  
4 yards 2060-35 Scenic Animals - Lt. Brown  
for backing  
70" x 70" piece of Air Lite® Colour Me 100% Cotton  
batting

## Cut Fabrics

**Note:** *All strips are cut across the width of the fabric (WOF) from selvaige to selvaige unless otherwise indicated.*

### From 2051-99 Tossed Camping Gear – Black:

\*Cut one 3-1/2" x WOF strip. Sub-cut twelve 3-1/2" squares.

### From 2052-41 Canoes – Ivory:

\*Cut one 3-1/2" x WOF strip. Sub-cut five 3-1/2" squares.

### From 7101-33 Urban Legend – Terra:

\*Cut one 5" x WOF strip. Sub-cut ten 1-1/4" x 5" strips; trim strip to 3-1/2" and cut ten 1-1/4" x 3-1/2" strips.

### From 2055-90 Tossed Moose - Lt. Gray:

\*Cut three 2" x WOF strips. Sub-cut twelve 2" x 5" strips and twelve 2" x 3-1/2" strips.

### From 2058-60 Plaid – Olive:

\*Cut two 3-1/8" x WOF strips. Sub-cut twenty 3-1/8" squares.

### From 7101-32 Urban Legend - Lt. Brown:

\*Cut four 2" x WOF strips. Sub-cut twelve 2" x 6-1/2" strips and twelve 2" x 5" strips.

### From 2053-88 Tonal Fish – Red:

\*Cut twelve 2" x LOF strips. Sub-cut twelve 2" x 8" strips and twelve 2" x 6-1/2" strips.

### From 7101-98 Urban Legend – Black:

\*Cut seven 2-1/2" x WOF strips for binding.

### From 2057-30 Paw Prints – Tan:

\*Cut twelve 1-1/2" x WOF strips: six for border 2, six for the sashing.

### From 2050-39 Animal Blocks – Brown:

\*Trim eight blocks to 9-1/2".

### From 2061-60 Animal Silhouettes – Olive:

\*Cut seven 4-1/2" x WOF strips for border 3.

### From 7101-41 Urban Legend – Ivory:

\*Cut six 2" x WOF strips. Sub-cut twelve 2" x 9-1/2" strips and twelve 2" x 8" strips.

\*Cut two 2-3/4" x WOF strips. Sub-cut twenty 2-3/4" squares.

\*Cut one 5-3/4" x WOF strip. Sub-cut five 5-3/4" squares.

\*Cut six 1-1/2" x WOF strips for border 1.

\*Cut six 1-1/2" x WOF strips for sashing.

## Assemble Blocks

*Measurements include 1/4" seam allowances. Sew with right sides together unless otherwise stated. If no direction is specified, press the seam toward the darker fabric.*

1. Sew a 2" x 3-1/2" 2055-90 Tossed Moose - Lt. Gray to one side of a 3-1/2" 2051-99 Tossed Camping Gear – Black square. Press the seam away from the center. Turning the patch counterclockwise once, so the Lt. Gray is on top, sew a 2" x 5" 2055-90 Tossed Moose - Lt. Gray strip to the right side (*figure 1, next page*). Press the seam as before. Repeat to make twelve 5-1/2" units.



# Wilderness Trail - Quilt 2 Page 2

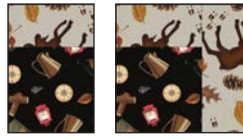


Figure 1 – Make (12) 5-1/2" units.

2. Turn the Step 1 units (the Lt. Gray strips are on top and left of the center block). Next, sew a 2" x 5" 7101-32 Urban Legend - Lt. Brown to their right side and press the seams away from the center. Turn the units counterclockwise once and sew a 2" x 6-1/2" Lt. Brown strip to the right side of the patches, pressing the seams as before (*figure 2*).



Figure 2

3. With the Lt. Brown strips on the top and left of the units, sew a 2" x 6-1/2" 2053-88 Tonal Fish – Red strip to their right side and press the seams away from the center. Turn the units counterclockwise once and sew a 2" x 8" 2053-88 Tonal Fish – Red strip to the right side of the patches, pressing the seams as before (*figure 3*).



Figure 3

4. Finally, add the 2" x 8" and 2" x 9-1/2" 7101-41 Urban Legend – Ivory strips to all units as in the previous steps (*figure 4*). The log cabin blocks measure 9-1/2".



Figure 4 – Make (12) 9-1/2" blocks.

5. Mark a diagonal line on the wrong side of the 3-1/8" 2058-60 Plaid - Olive squares. With right sides together, place two marked Olive squares on opposite corners of one 5-3/4" 7101-41 Urban Legend – Ivory square, making sure drawn lines are intersecting in the middle and noting that the corners of the small squares will overlap. Stitch 1/4" on each side of the marked line (a), cut on the drawn line (b), and press each unit open (c). Place one more marked Olive square on the corner of each unit, stitch as before (d), and cut. Press the seams open (e) to make four 2-3/4" x 5" flying-geese units. Repeat with the remaining 3-1/8" Olive and 5-3/4" Ivory squares to make a total of twenty flying-geese units (*figure 5*).

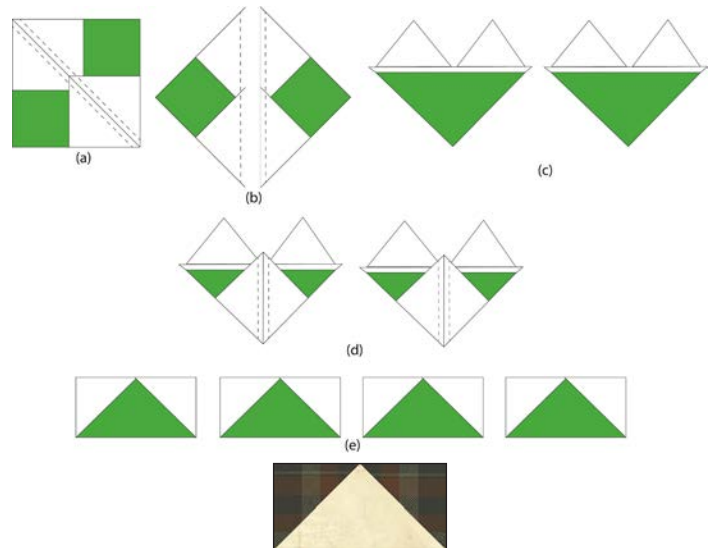


Figure 5 – Make (20) 2-3/4" x 5" units.

6. Sew a 1-1/4" x 3-1/2" 7101-33 Urban Legend – Terra strip to opposite sides of a 3-1/2" 2052-41 Canoes – Ivory square. Press the seams away from the center. Repeat to make five units. Sew one 1-1/4" x 5" 7101-33 Urban Legend – Terra strip to the top and one to the bottom of all the units to make five 5" patches (*figure 6*). Again, press the seams away from the center.



Figure 6 - Make (5) 5" units.

# Wilderness Trail - Quilt 2

Page 3

7. Noting fabric orientation, sew a Step 5 flying geese to opposite sides of the Step 6 units (*figure 7*). Press the seams toward the center.



Figure 7

8. Sew one 2-3/4" 7101-41 Urban Legend – Ivory square to each side of the remaining Step 5 flying geese. Press the seams away from the center. Make a total of ten rows. Then, noting fabric orientation, sew one row to the top and one to the bottom of the Step 7 units to make five 9-1/2" star blocks (*figure 8*). Press the seams in one direction.



Figure 8 – Make (5) 9-1/2" blocks.

## Assemble Quilt Top

*Assemble the center of the quilt first, add the three blocks to each side, and add the top and bottom blocks as described below.*

9. Referring to the quilt photo for block placement, lay out three 9-1/2" 2050-39 Animal Blocks – Brown blocks and two 1-1/2" x 9-1/2" 7101-41 Urban Legend – Ivory sashing strips for rows 1 and 3. Lay out two Animal Blocks, one Step 8 star block, and two 1-1/2" x 9-1/2" Ivory sashing strips for the middle row. Add two 1-1/2" x 29-1/2" 7101-41 Urban Legend – Ivory sashing strips in between the block rows. Join the blocks and sashing strips together in each row and press the seams toward the sashing. Next, sew together the block rows and the long sashing strips. Again, press the seams toward the sashing.

10. Sew a 1-1/2" x 29-1/2" 2057-30 Paw Prints – Tan sashing strip to opposite sides of the quilt center. Press

the seams toward the sashing.

11. Noting block orientation, sew together two Step 4 log cabin blocks, two 1-1/2" x 9-1/2" 7101-41 Urban Legend – Ivory sashing strips, and one Step 8 star block, deciding if you are making this strip for the left or the right side, and orienting the log cabin blocks accordingly. Next, press the seams toward the sashing. Repeat to make another strip for the other side, again, noting the orientation of the log cabin blocks. Finally, sew one strip to each side of the quilt center and press the seams toward the sashing.

12. Sew one 1-1/2" x 49-1/2" 2057-30 Paw Prints – Tan sashing strip to the top and one to the bottom of the quilt center. Press the seams toward the sashing.

13. For the top row, and noting block orientation, sew together four log cabin blocks, two 1-1/2" x 9-1/2" 2057-30 Paw Prints – Tan sashing strips, two 1-1/2" x 9-1/2" 7101-41 Urban Legend – Ivory sashing strips, and one star block. Press the seams toward the sashing. Make the bottom row in the same manner. Sew one strip to the top and one to the bottom of the quilt top. Press the seams toward the sashing.

14. For border 1, sew six 1-1/2" 7101-41 Urban Legend – Ivory border strips together end to end using diagonal seams. Measure the vertical length of the quilt top through the center and cut two border strips that length. Sew one strip to each side of the quilt top. Measure the width of the quilt top through the center. Cut two border strips that length and sew one to the top and one to the bottom. Press the seams toward the borders.

15. Repeat Step 14 with the six 1-1/2" 2057-30 Paw Prints – Tan strips to make and add border 2.

16. Repeat Step 14 with the 4-1/2" 2061-60 Animal Silhouettes – Olive strips to make and add border 3.

## Finishing

17. Create a quilt sandwich with the batting between the quilt top and the backing. Pin or baste layers

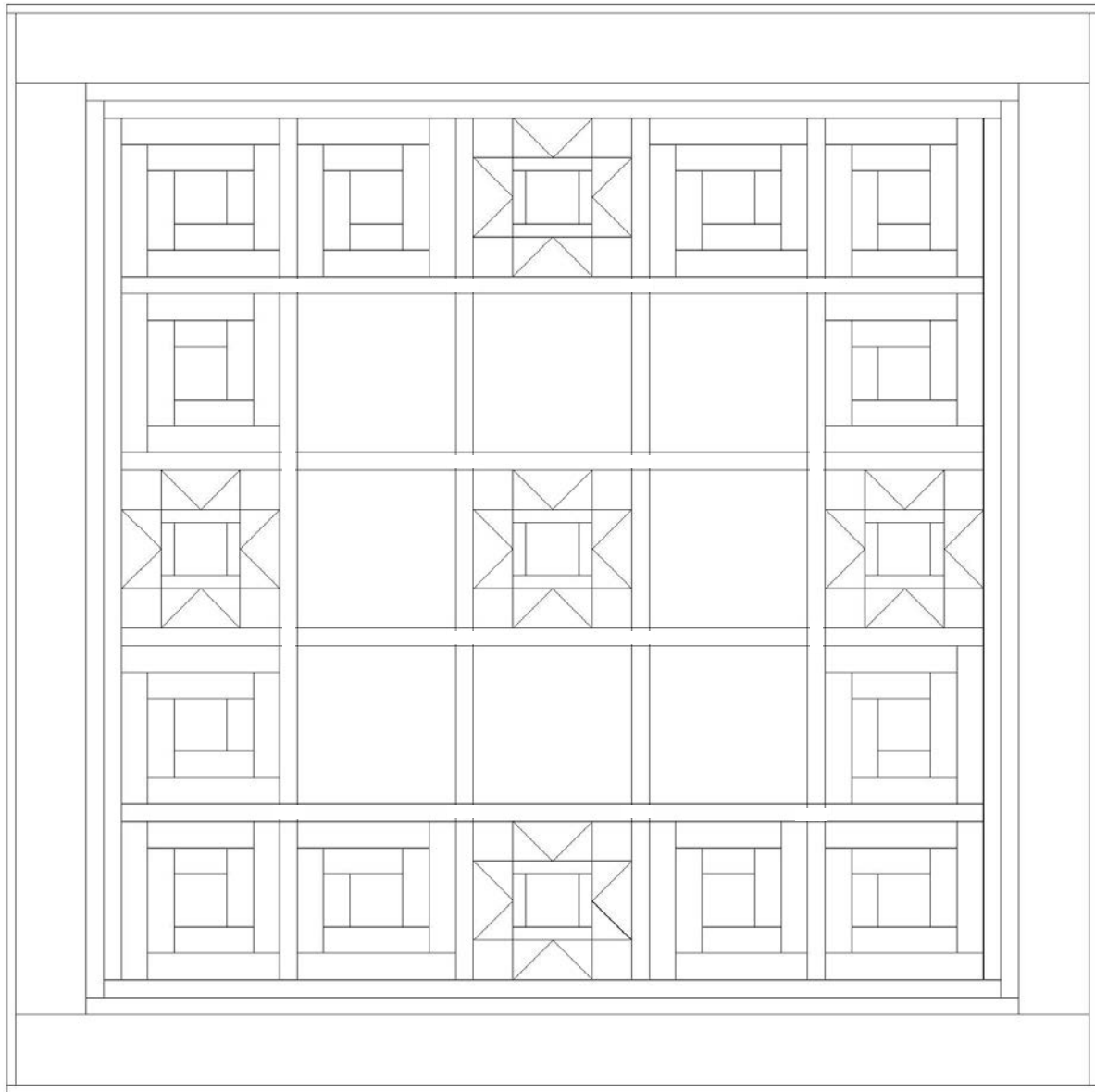
# Wilderness Trail - Quilt 2

Page 4

together, mark quilting design, and quilt by hand or machine. When quilting is complete, remove pins or basting, and trim batting and backing even with raw edges of the quilt top.

18. Join the seven 2-1/2" 7101-98 Urban Legend

- Black binding strips together end to end using a diagonal seam to make one long strip. Fold in half lengthwise and press. Sew binding to the edges of the quilt, mitering corners, and overlapping ends. Fold binding to the back of the quilt and stitch it in place by hand to finish.



Quilt Diagram

©2021 Blank Quilting Corporation

*Every effort has been made to ensure that all projects are error free. All the information is presented in good faith; however, no warranty can be given nor results guaranteed as we have no control over the execution of instructions. Therefore, we assume no responsibility for the use of this information or damages that may occur as a result. When errors are brought to our attention, we make every effort to correct and post a revision as soon as possible. Please make sure to check [www.blankquilting.net](http://www.blankquilting.net) for pattern updates prior to starting the project. We also recommend that you test the project prior to cutting for kits. Finally, all free projects are intended to remain free to you and are not for resale.*